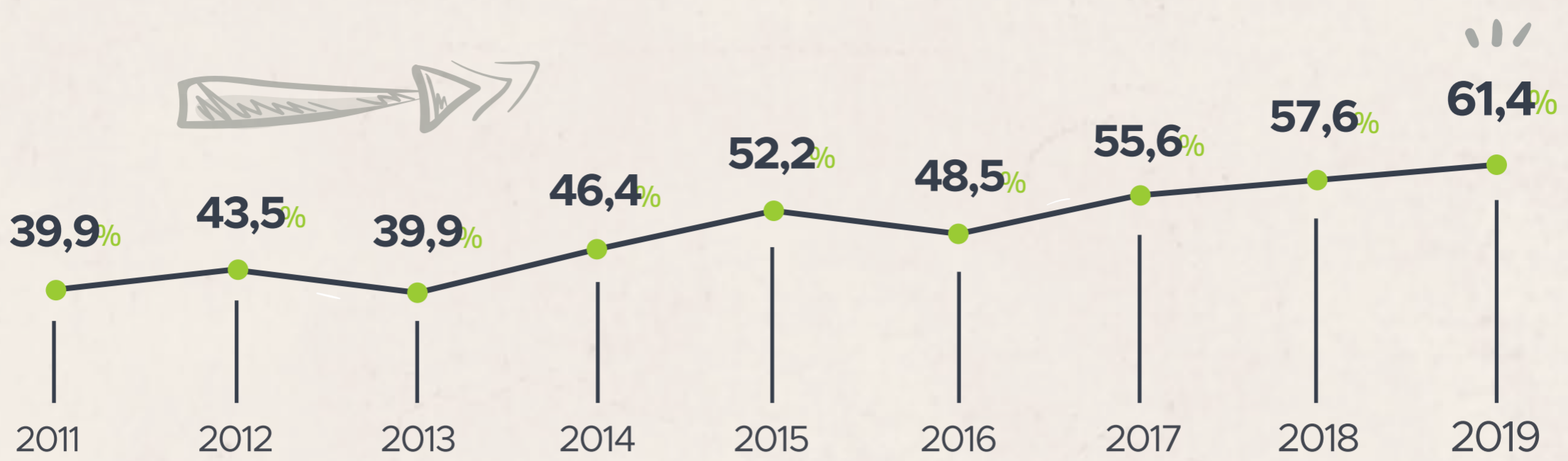


CONTINUITY RATE FROM

high school to higher education

Allows to identify the number of high school graduates who continue their higher education studies in the year following their graduation.



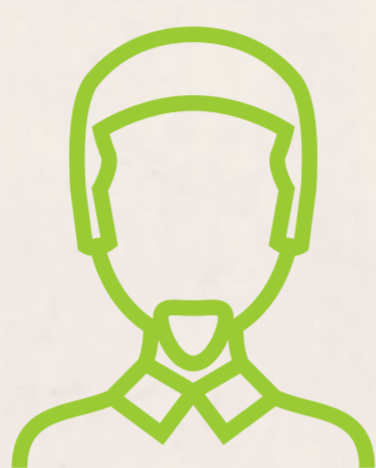
By 2019, 61,4% of high school graduates surveyed in 2018 **continued** to higher education.

Continuity rate by gender



63%

63 out of 100 women continue in Higher Education



59%

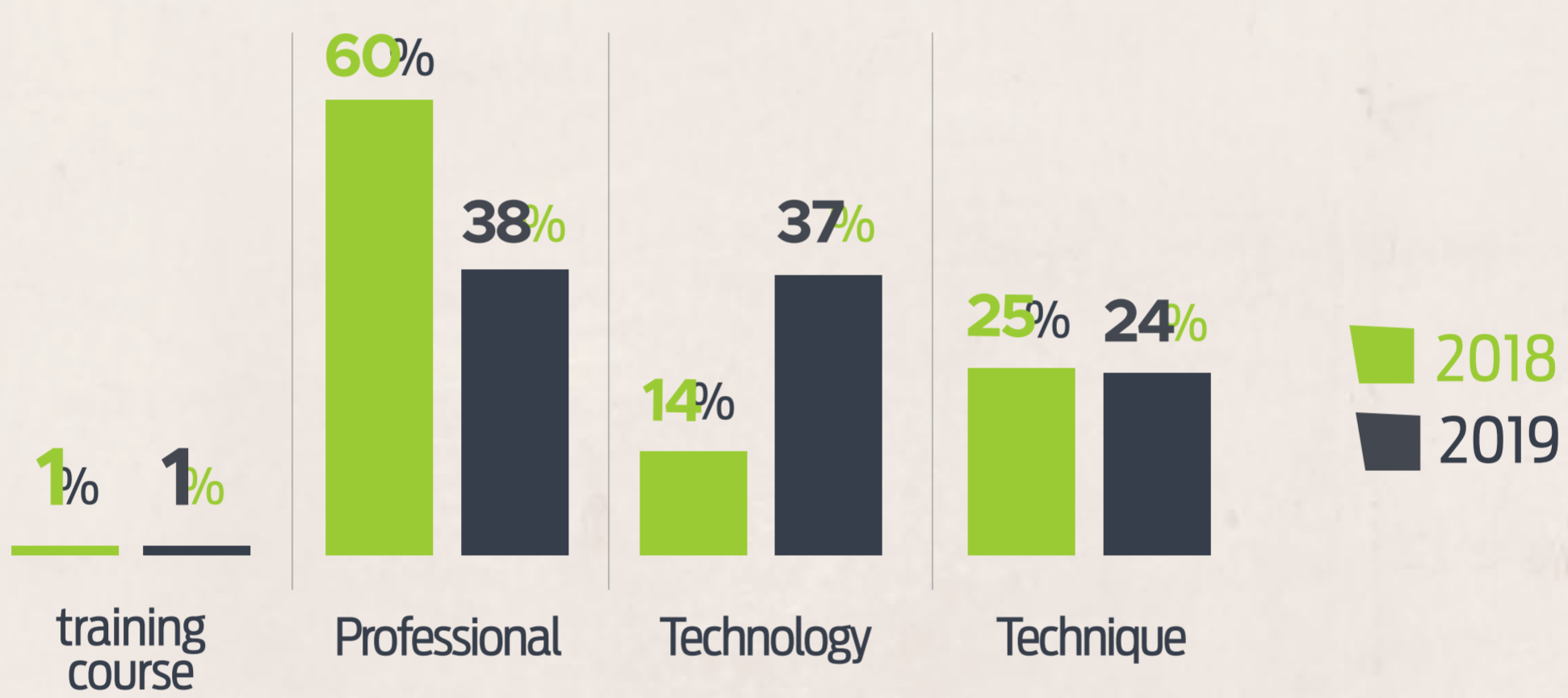
59 out of 100 men continue in Higher Education

The majority of those who continue their studies are **women, equivalent to 63%.**

In Medellin **61 out of 100 people** continue to Higher Education

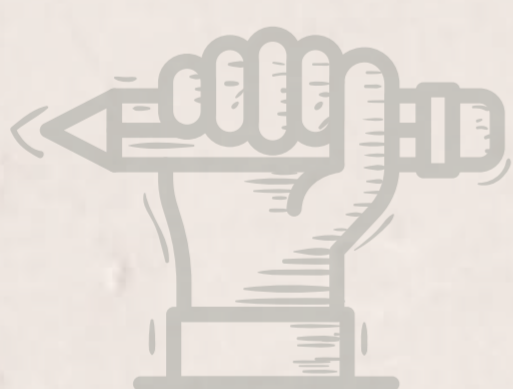


The educational levels the students aim for by presenting the exam are:



When analyzing the educational level chosen by students who continued to higher education, it is identified that the selection of university programs has decreased and that of technological **programs has increased year by year.**

TOP 10 most chosen programs



- 1 Business Administration
- 2 Psychology
- 3 Nursing Assistant
- 4 Law
- 5 Healthcare administrative
- 6 Public accounting
- 7 Administrative management
- 8 Multimedia production
- 9 Civil engineering
- 10 System engineering

The majority of the students that continue to the higher education enrolled in the **traditional academic programs** like Business administrator, Nursing assistant and Law.

It should **be note that in the position 8 of the top 10** of the most chosen programs, we can find the **multimedia production technology**, showing that nowadays this program has been positioning itself like an area of interest for the high school graduates.

- 1 Sena
- 2 ITM
- 3 Universidad de Antioquia
- 4 Tenológico de Antioquia
- 5 Politécnico Jaime Isaza C.
- 6 Pascual Bravo
- 7 Colegio Mayor de Antioquia
- 8 Universidad Nacional
- 9 Universidad Luis Amigó
- 10 Politécnico de Antioquia

TOP 10 MOST CHOSEN Higher Education Institutions



It is found than the **Sena** is the **HEI where more recent** high school graduates enroll , followed by institutions like ITM and TdeA.

68% of the recent **high school graduates** chose a **public HEI** and 32% chose a private HEI.

21% of the recent high school graduates have decided to continue their studies in the **HEI attached to the municipality of Medellín.**